

Navigating the Social and Professional Networking Highway

*Valerie Odeh & Sondi Aponte
Brigitte Dufour, Co-Author*

Office of Newborn Screening

www.aznewborn.com

Leadership for a Healthy Arizona



Objectives



❑ Adopt proven methods of collaboration using web based tools - a seamless EHDI system is possible!



❑ Utilize social networking to reach across the generational divide - with diverse learning and communication styles!



Web and Video Conferencing



Leadership for a Healthy Arizona

SharePoint

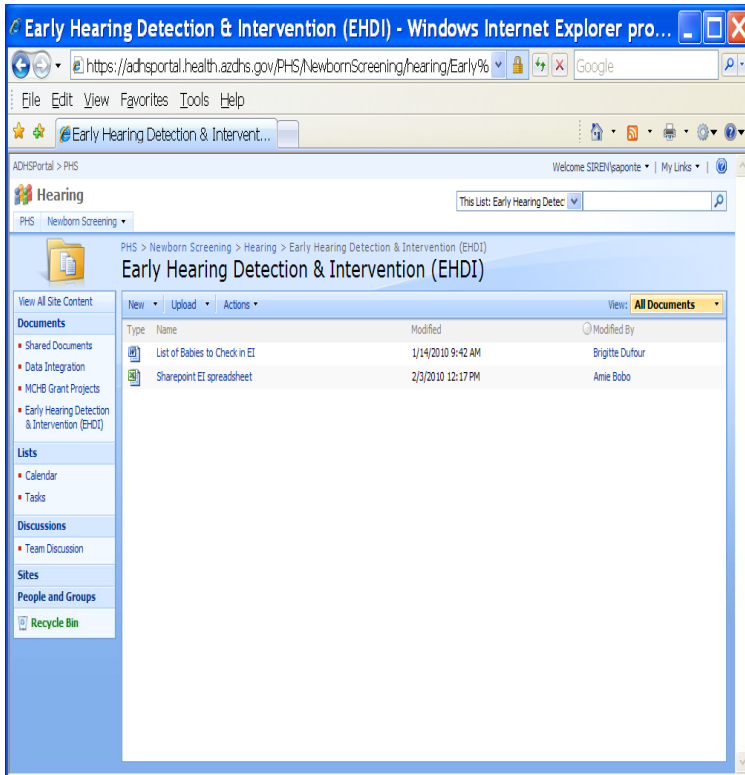
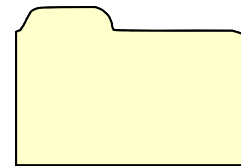


Collaboration
Central Storage
Communication



Sharing

- Ideas
- Documents
- Information



Leadership for a Healthy Arizona



1- Data Integration Workgroup

Quick
Launch
Bar

Options

View All Site Content

Documents

- Shared Documents
- Data Integration
- MCHB Grant Projects
- Early Hearing Detection & Intervention (EHDI)

Lists

- Calendar
- Tasks

Discussions

- Team Discussion

Sites

People and Groups

Recycle Bin

Data Integration - Windows Internet Explorer provided by AZDHS

https://adhportal.health.azdhs.gov/PHS/NewbornScreening/hearing/Data%...

File Edit View Favorites Tools Help

Data Integration

ADHSportal > PHS Welcome SIREV@saponte | My Links

Hearing

This List: Data Integration

PHS > Newborn Screening > Hearing > Data Integration

Data Integration

View All Site Content

New Upload Actions View: All Documents

Type	Name	Modified	Modified By
Folder	Equipment and Software Quotes	1/27/2010 3:34 PM	Randal Ralph
Folder	GITA PIJ	1/14/2010 1:26 PM	Randal Ralph
Folder	GRANT SUBMISSIONS	12/21/2009 11:07 AM	SIREV@saponte
Folder	Project Plans	1/12/2010 8:33 AM	Randal Ralph
Folder	Technology Meeting Minutes	1/27/2010 2:57 PM	Randal Ralph
File	SIM workflow	12/21/2009 11:05 AM	SIREV@saponte

View All Site Content

Documents

- Shared Documents
- Data Integration
- MCHB Grant Projects
- Early Hearing Detection & Intervention (EHDI)

Lists

- Calendar
- Tasks

Discussions

- Team Discussion

Sites

People and Groups

Recycle Bin

Document
Library

Threaded
Discussions

Type	Name
Document	AZ.BUDGET JUSTIFICATION
Document	AZ.NARRATIVE
Document	AZ.Project Abstract
Document	AZ.WORK

View Properties

Edit Properties

Edit Document

Delete

Send To

Check Out

Publish a Major Version

Version History

Workflows

Alert Me

Leadership for a Healthy Arizona

Arizona
Department of
Health Services

2- 2008 CDC Data Survey

Part I
Screening

Part III
Early
Intervention



Part II
Diagnostic

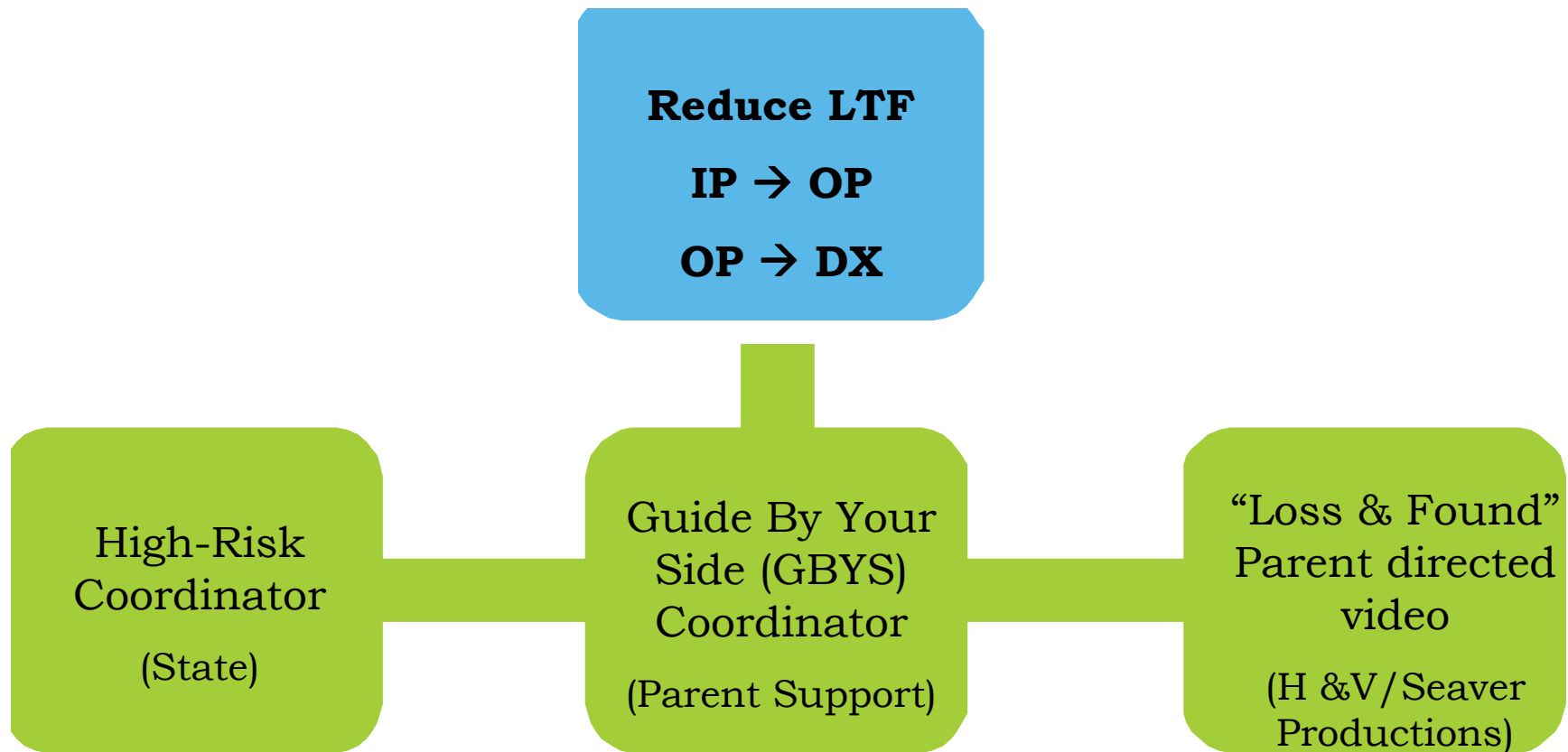
Part IV
Demographics



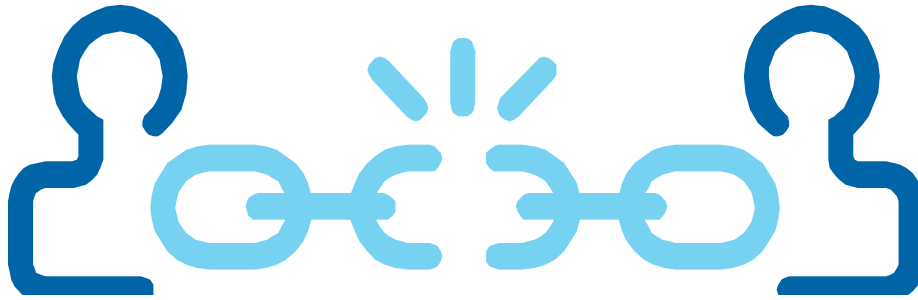
Leadership for a Healthy Arizona

Arizona
Department of
Health Services

3- MCHB EHDI Grant



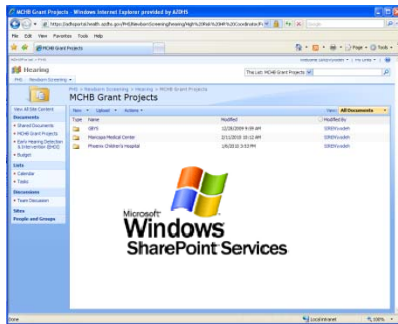
Coordinator Collaboration



**High Risk
Coordinator**

**GBYS
Coordinator**

- Combined effort
- Constant communication
- SharePoint
 - Secure
 - Central site to exchange information



SharePoint

Leadership for a Healthy Arizona

Arizona
Department of
Health Services

Hospital Collaboration

- SharePoint
- High Risk Project
 - Communication tool for hospitals
 - Secure folders for each hospital
 - HIPAA compliant
 - Sharing resources: High-Risk Checklist
- GBYS – parent support
 - Providing patient updates
 - Sharing resources



Newborn Screening Website

- ❑ Enhanced webpage
- ❑ Parent/Provider friendly
 - ❑ Parent – Visual
 - ❑ Provider – Structured
- ❑ Dedicated email for users to provide feedback, ask questions, etc.
 - ❑ Hearing@azdhs.gov
 - ❑ AZNewborn@azdhs.gov

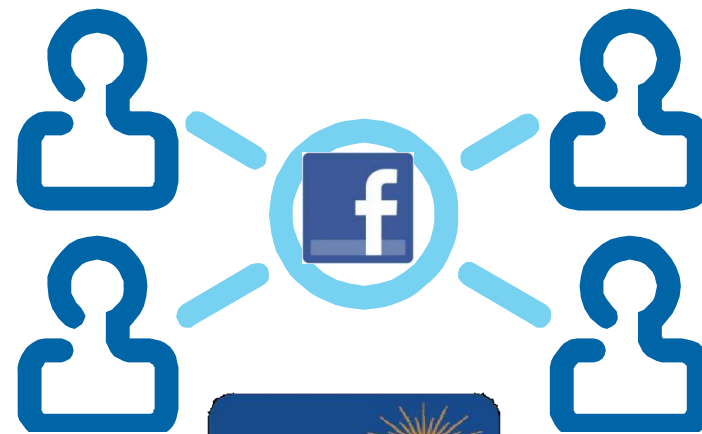


Leadership for a Healthy Arizona



Social Networking

- Arizona EHDI on Facebook
- Connecting with parents & professionals
- Increasing awareness of newborn hearing screening
 - “Fans”
 - Sharing EHDI events
 - Utilizing “News Feeds”



Professional Networking

- ❑ iLinc
- ❑ Virtual Meetings
- ❑ E-Learning
- ❑ Comments
- ❑ Surveys
- ❑ Facebook “Fans”

Add your comments:

Name: [Preview your comment](#)

Email: Click on the preview button to see what your comment will look like.

Your message: (add a funny face!)

Answer the question below
Name a pet that goes woof!



Web and Video Conferencing



Leadership for a Healthy Arizona

Arizona
Department of
Health Services

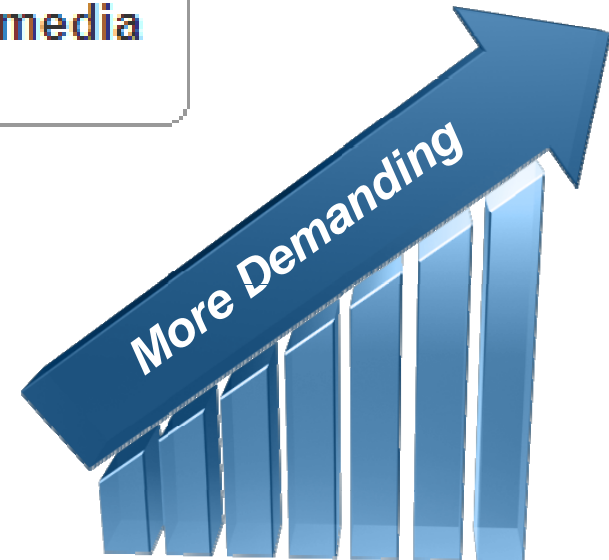


The Future



Have content for ADHS social media sites? [Submit it here.](#)

“TXT YOUR QUESTION HERE”



Leadership for a Healthy Arizona

Arizona
Department of
Health Services

Summarize

Professional

Features

- ❑ Secure
- ❑ Role Based
- ❑ Real time

Benefits

- ❑ Reduce Redundancy
- ❑ Improve Efficiency

Parents

- ❑ Outreach
- ❑ Communication
- ❑ Raise Awareness
- ❑ Informal



It looks Different!



Are YOU Ready? Questions?

Sondi Aponte
602-680-0972
apontes@azdhs.gov

Valerie Odeh
602-689-3611
odehv@azdhs.gov



Brigitte Dufour
602-364-1406
dufourb@azdhs.gov

